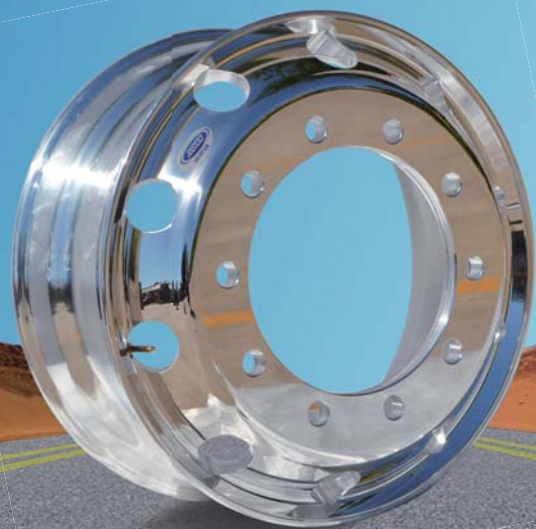


公交锻造轮毂知名品牌

Leading Brand of Bus Forged Wheel



公交车卡车专用
精品锻造铝合金轮毂



Make Wheel Build Dream



秦皇岛市嘉世通汽车零部件有限公司

中国河北省秦皇岛经济技术开发区松花江道3-1号
www.jastoowheel.com.cn
0335-3573003

AIM FOR LIGHT WEIGHT WHEELS CONTRIBUTE TO ENERGY CONSERVATION AND EMISSIONS REDUCTION

致力于车辆轮毂轻量化
助力国家节能减排大计

秦皇岛市嘉世通汽车零部件有限公司坐落于车轮之都---河北省秦皇岛市，是一家专业从事锻造铝合金轮毂生产销售的企业，产品应用于商用车、改装车和摩托车等车辆。下辖子公司嘉世达(海南)汽车零部件有限公司。

嘉世通使用最优质的6061航空系铝材，依托强大的技术队伍和检测团队，研发和生产16-30寸轻量化高质量锻造铝合金轮毂，每只轮毂都精密定制并严格检测。产品覆盖国内30多省市，并远销海外20多个国家和地区，广受客户好评。

公司与国内唯一国家级轮毂产品检测实验中心达成战略合作，能够进行各种规格轮毂的可靠性试验检测，机械性能检测、化学成分分析、超声波检查等。

公司秉承“创造新理念、建立新模式、打造新标杆、实现新价值”的经营思路，研发制造安全可靠、轻质节能的锻造铝合金轮毂，满足顾客为各种车型配套的需求，推动汽车行业绿色升级。



Locating in Qinhuangdao city Hebei, Qinhuangdao Jiashitong Auto Parts Co., Ltd specializing in manufacturing and marketing for Forged Aluminum wheels, which are wide used for commercial vehicles, cars and motorcycles. JASTOO owns a sub company "JASDA (Hainan) Auto Parts PARTS CO.,LTD" .

Using the finest 6061 T6 aviation grade aluminum alloy and thanks to the powerful technical and testing team, JASTOO is developing and producing 16-30 inches high quality light weight aluminum forged wheels. Every wheel is custom engineered and strictly tested. JASTOO wheels market covers more than 30 provinces and cities domestic, as well as more of 20 countries overseas, with well reputations from clients.

JASTOO has the cooperation with the only national-level wheel testing lap center, whom could carry out most testing for wheels: reliability testing, mechanical performance testing, chemical composition analysis, ultrasonic examination and so on.

Based on the idea of "Create New Concept, Establish New Mode, Make New Benchmarking, Realize New Value", JASTOO will continue to focus on providing reliable and light weight forged aluminum wheels for different kinds of vehicles and improve the light green upgrade of vehicle industry.





棒料初锻
Billet First Forging



二锻冲孔
Second Forging & Stamping



旋压成形
Spinning the rim



机加精工
Machining to Wheel



涂装装车
Painting & Installation



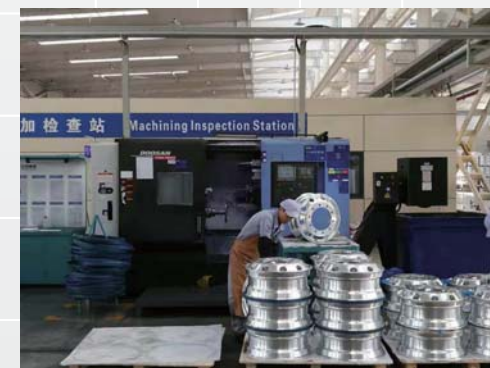
全自动锻造生产线 Automatical Forging Wheels Production Line

- 10000T 全自动化锻造生产线
10000T Intelligent Forging Production Line
- 6061 T6 系列航空级铝合金
6061 T6 Aluminum Alloy Aviation Grade
- 年产能50万只锻造轮毂
Annual Production 500,000 Forged Wheels
- 雄厚的研发，制造和营销团队
Strong teams of R&D, Production & Marketing
- 为市场提供轻量化，高质量，安全可靠的轮毂
Provide Light, Quality and Safe Wheels for Markets



▲ 智能旋压机 Intelligent Spinning Machine

Intelligent CNC Machine 智能精加工 ▼



质量控制

Quality Control & Testing

- 动平衡及跳动检测

Dynamic Balance & Circular Run Out Test

- 三坐标检测

Coordinate Measuring

- 荧光渗透探伤检测

Fluorescence Penetrant Flaw Detection

- 气密性检测

Hermetization Detection

- 冲击测试

Impact Test

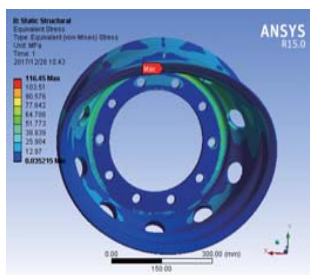
- 弯曲疲劳测试

Bending Fatigue Test

- 径向疲劳测试

Radial Fatigue Test

精准



科学

严谨



嘉世通轮毂优势

Features of JASTOO Forged Wheels

7%

更省油
年均节油量达7%

Fuel Saving
Annual fuel saving up to 7%

20%

更耐用
制动寿命延长20%以上

Higher Durability
Brake system lifespan 20% longer

26%

省轮胎
轮胎磨损降低26%

Save Tire
Tire wear reduce 26%

57%

重量轻
为钢圈重量的57%

Light Weight
57% weight of steel wheels in same size

100%

更美观
多种亮表面处理比钢轮更美观

More Beautiful
Multi bright treatment, more beautiful than steel wheels

100%

更环保
铝质材料可回收率达100%

Eco - friendly
Aluminum recovery rate up to 100%

110%

舒适性高
弹性模量较钢轮提升110%

High Comfort
Elastic modulus improves 110% than steel wheels

300%

安全性好
锻铝热传导系数为钢轮的3倍

More Safety
Forged aluminum has 3 times than steel in thermal conduction



轮毂规格

Wheel Model Chart

嘉世通锻造轮毂涵盖世界大多数轮毂尺寸及所匹配的螺母安装件，适用于公交车，卡车等商用车辆。

有多种亮表面处理方式可选，风格上也可定制。

Jastoo Forged wheels covers most model sizes used in the world as well as the nut fittings, applied for Commercial vehicles like buses & trucks.

Multi bright finish optios available. And can customize in wheel styles.



尺寸	型号
24.5x8.25	JDH245825
22.5x14.0	JDH114-22514
22.5x13.0	JDH113-22513
22.5x11.75	JDH112-2251175
22.5x11.75	JDH111-2251175
22.5x9.0	JDB001-22590
22.5x8.25	JDB002-225825
22.5x7.5	JDB003-22575
22.5x6.75	JDB225675
19.5x7.5	JDB009-19575
19.5x6.75	JDB108-195675
17.5x6.75	JDBT020-175675
17.5x6.0	JDB104-17560-1
16x5.5J	JDBQ306-1655

螺栓数量	PCD	螺栓直径(mm)	中心孔直径	偏距(mm)	板厚(mm)	最大负载(kg)
10	285.75	26.75	220.1	168	24	3855
10	335	26	281.2	28	28	5800
10	335	26	281.2	14	28	5300
10	335	26	281.2	24	24	4500
10	335	26	281.2	146	26	4500
10	335	26	281.2	176	24	4125
10	335	26	281.2	167	23	3650
10	335	26	281.2	162	22	3452
8	275	26	221	152	22	2550
8	275	24.5	221	156	22	2500
8	275	24	221	147	22	2750
6	245	26	202	141	21	2500
6	222.25	24	164	135	20	1750
6	205	21	161	118	15	1360

合作客户

Cooperated Clients

嘉世通与国内众多车企和公交公司有深度合作，无论是产品品质，还是售后服务，受到客户广泛好评。为客户提供优质的产品和服务也是嘉世通的目标与责任。

Jastoo has deep cooperation with many truck manufacturers and bus companies. Well reputed by wheel quality and after service, which is the goal and obligation of Jastoo.



上海巴士



北京公交



大连公交



西安公交



企业愿景

成为汽车零部件行业的领导者

企业使命

推动全新一代汽车的加速发展

企业宗旨

创造新理念 • 建立新模式 • 打造新标杆 • 实现新价值

企业价值观

诚信 • 进取 • 奉献 • 合作



ASTO

嘉世通